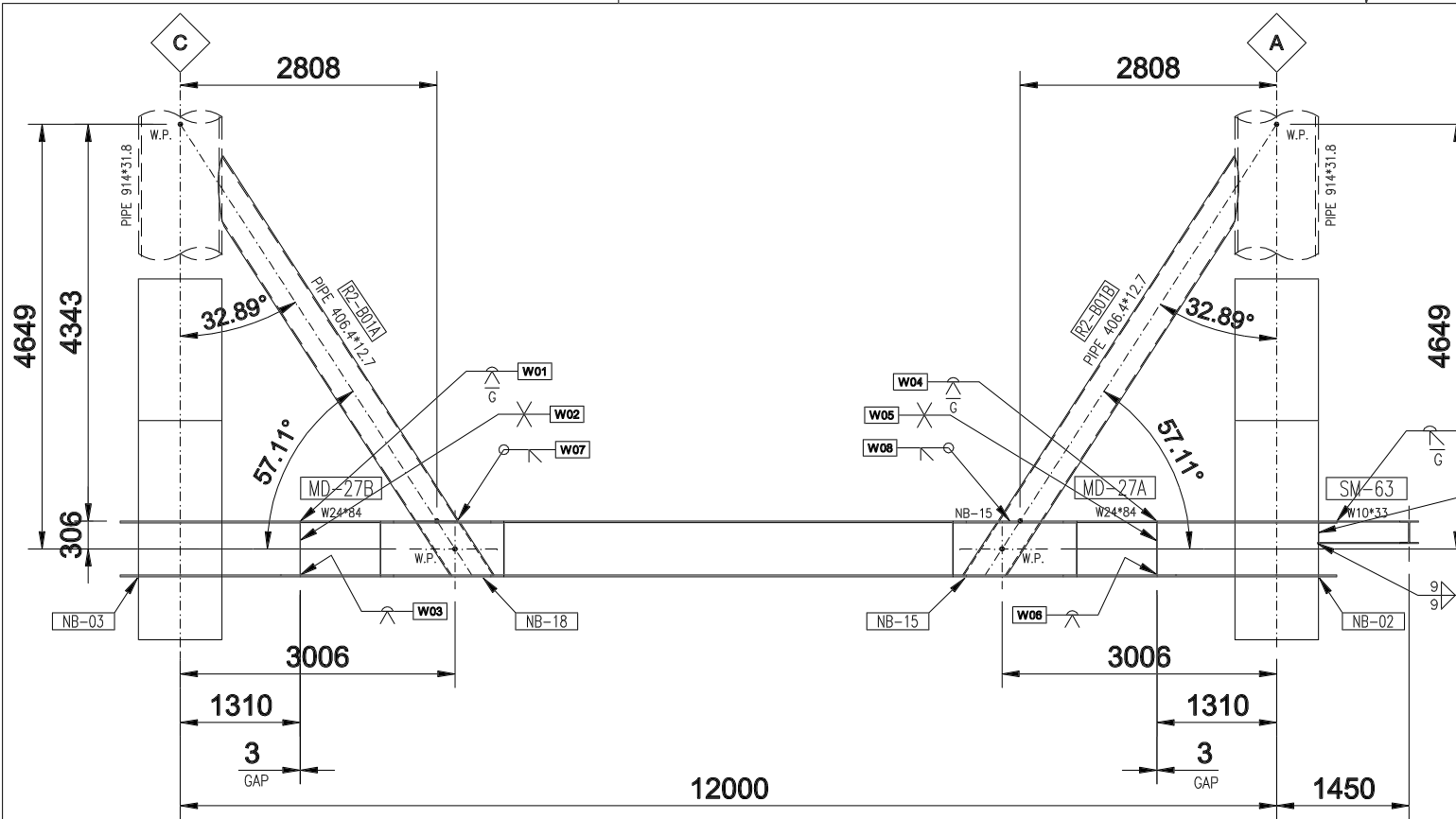
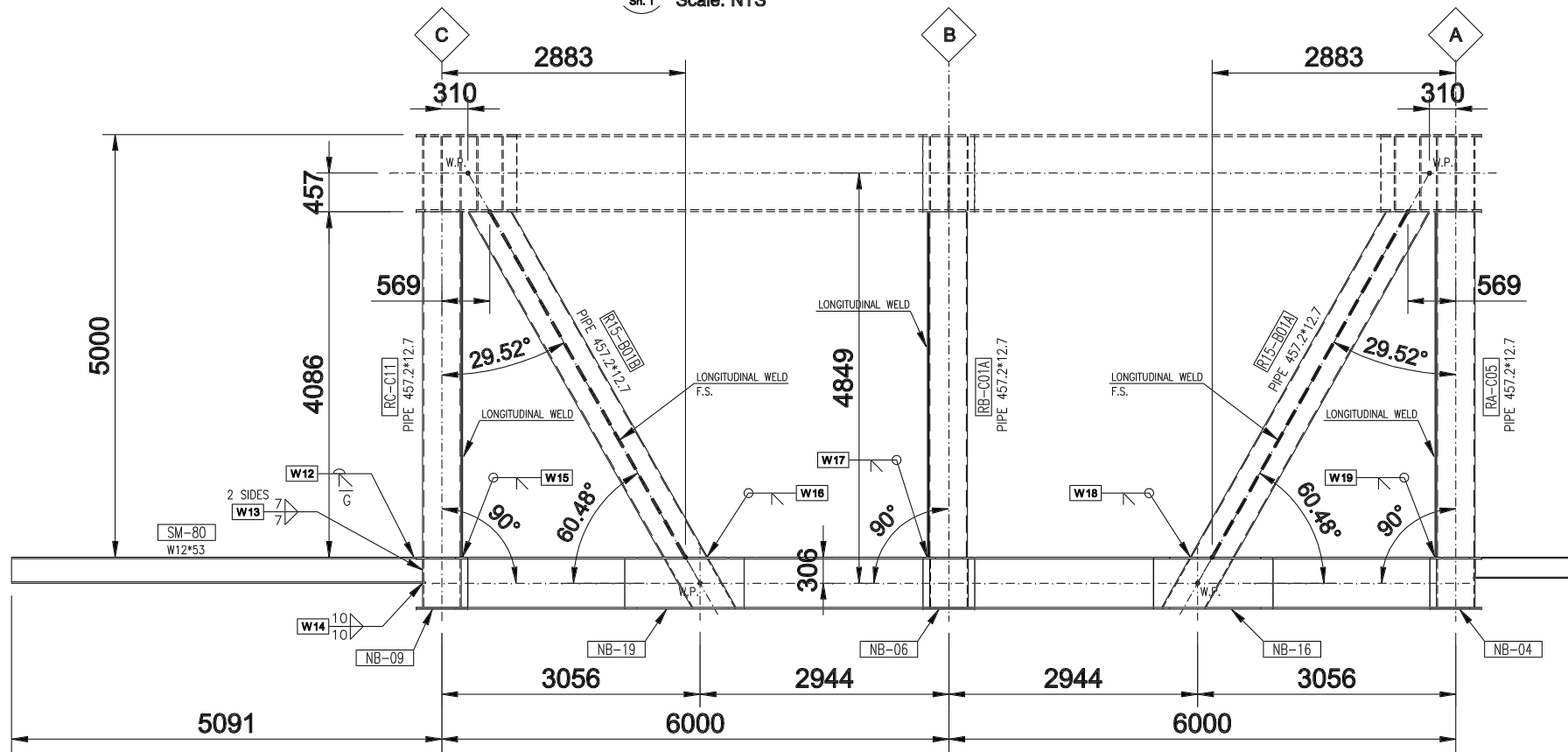


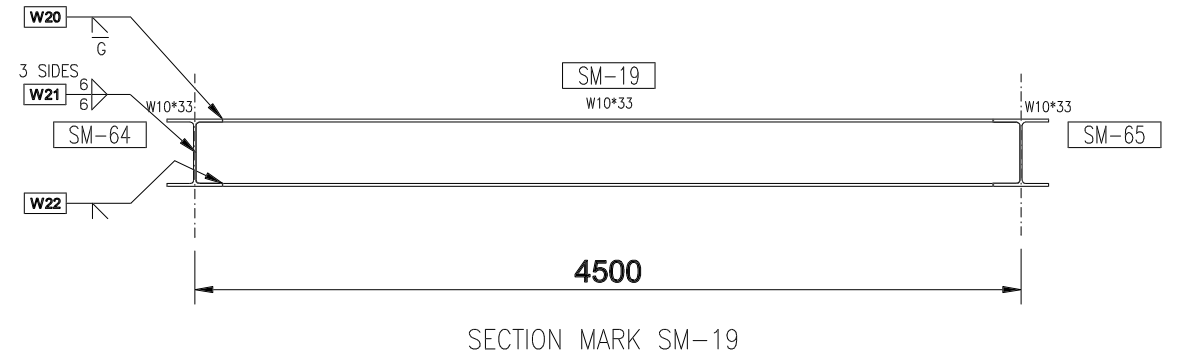
This drawing and the design it covers are the property of PETROMAR. They are merely loaned and on the borrower's express agreement that they will not be reproduced, copied, loaned, exhibited, nor used except in the limited way and private use permitted by any written consent given by the lender to the borrower.



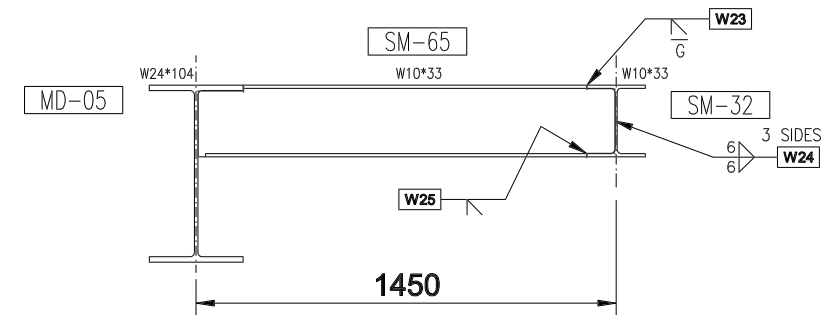
A-A SECTION
Sh.1 Scale: NTS



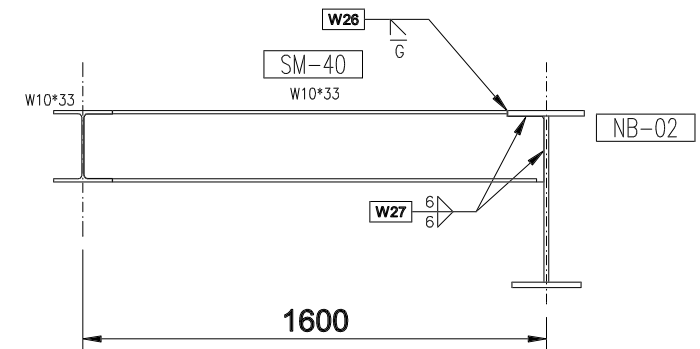
B-B SECTION
Sh.1 Scale: NTS



SECTION MARK SM-19



SECTION MARK SM-65



SECTION MARK SM-40

NOTES

- 1 - ALL DIMENSIONS ARE IN MILLIMETRES U.N.O.
- 2 - ALL ELEVATIONS ARE REFERRED TO MEAN LOW WATER (M.L.W.) ± 0.00 m.
- 3 - THE SYMBOL Wxx INDICATES WELDS TO BE PERFORMED IN FIELD
- 4 - LONGITUDINAL WELD N.S.
- 5 - LONGITUDINAL WELD F.S.
- 6 - WELD NUMBER: W01 - W27

REF. DOC. N°	REV	REFERENCE DOCUMENT TITLE	Rev.	Date DD-MM-YY	Revision Description	ICV	JES	MMF	ADV/DMQI
F33099-PTM-200-STR-ASD-2300	01	DECK - ERECTION							
F33099-PTM-200-STR-SAD-2103	02	DECK - MAIN DECK - SUBASSEMBLY - M01							
F33099-PTM-200-STR-SAD-2104	01	DECK - MAIN DECK - SUBASSEMBLY - M02a							
F33099-PTM-200-STR-SAD-2105	01	DECK - MAIN DECK - SUBASSEMBLY - M02b							
F33099-PTM-200-STR-SAD-2106	02	DECK - MAIN DECK - SUBASSEMBLY - M03	2	05-MAR-09	REVISED Sh.1, 4, 5, 6 I.A.W. CLIENT REVISION	ICV	JES	MMF	ADV/DMQI
F33099-PTM-200-STR-SAD-2107	02	DECK - MAIN DECK - SUBASSEMBLY - M04	1	15-FEB-09	APPROVED FOR CONSTRUCTION	ICV	JES	MMF	ADV/DMQI

Scale: N.T.S.	Company: TOTAL E&P ANGOLA ANGOLA - BLOCK 17	Contractors: Salpem sa. TECHNICAL OFFICE - SOYO, YARD
Original Paper size: A3	Project name: BLOCK 2 SINGLE CENTRAL PLATFORM (SCP)	Document title: DECK MAIN DECK ASSEMBLY - MD01
Plotter: A1 - A3	Company's contract N°: N/A	Product: N/A
	Type of document: DRAWING	Contractor's documentation identification:
	Company's document identification: -	Job N°: F33099
		Origin: PTM
		Unit: 200
		Discipline: STR
		Doc. Type: ASD
		Seq. Num.: 2201
		Sheet: 2-6
		Rev.: 2